
COVID-19 Pandemic Contents

New Cloth Masks 2

EMS..... 2

 Recon Model Reminder 2

 Swab Testing: King County Medical Examiner..... 2

 Swab Testing: First Responder Test Site..... 3

COVID-19 101 3

 Community Transmission - How does the virus spread? 3

King County Stats..... 4

Department Updates..... 5

 Fireground & Training..... 5

 Inspections 5

 Blood Pressure..... 5

 Division Visits 5

 Friday Night Lights..... 5

 IT Update..... 6

 Health One Referrals..... 6

 COVID-19 Training Package #10 Scenarios/FAQs..... 6

Department Training..... 6

Every Friday at 1000 hours, the Fire Chief and Leadership Team will conduct a 60-minute Department-wide Skype informational meeting. It will be posted on the activity scheduler.

Got Ideas???

We will continue to add-in fire training pieces. Do you have anything you have built for yourself or your crews? We got today’s hazmat ERG presentation and scenario from Lt. Ryan Nash. Pass them onto your Chiefs so we can harness these great ideas!

May 1st marks Day 40 of Washington State’s stay-at-home order. During this time, we have responded to 41 FIBs which have resulted in 3 multiple alarms and 14 structure fires.

As Washington slowly and methodically begins to reopen, we will design the restart of our manipulative training to do the same. To begin with, starting May 4th, we are allowing our units to train outside of their stations as long as physical distancing and/or a facemask or SCBA is used to avoid exposure.

Thank you for being so disciplined and patient. -Bryan W. Hastings

Members are to log this training in TIMS

- a. Session Title: (Company name/Shift) - COVID-19 Drill #10
- b. Subject: 09-EMS Lesson: 09-10 Infectious Disease

New Cloth Masks

- All SFD members are being issued three (3) cloth masks early in the week of May 4 for use to comply with CDC and SFD guidance on face covering while in public, or around other members at the station.



- Due to the fit and construction of these masks, they are more effective than the provided neck gaiters.
 - These masks can be used as a preferred alternative to, or in conjunction with the neck gaiter to accomplish face covering while on duty.
 - Each mask comes with two (2) paper filters that can be tucked into a sleeve inside the mask. These filters are optional, and not required for the intended function of the mask.
 - Members will be asked to sign for their issued masks. We currently have no inventory to re-supply any masks or filters.
 - Per the manufacturer:
 - The masks can be washed with regular water, avoid hot water. Hang dry is best.
 - The filters are not washable. They must be removed prior to washing the mask.
- Members are reminded that the Fire Chief has asked us to demonstrate leadership in compliance with CDC and City guidance on face covering to protect the community and each other.

EMS

Recon Model Reminder

- Our Recon Model as outlined in previous Training Documents has proven effective in limiting exposures.
 - Continue to operate in the context of an aid car; have only 2 members in Level 3 PPE evaluating the patient. All other members are in Level 2 PPE unless they enter the hot zone.
 - Recon EMTs need to provide a radio report to all incoming units.

Swab Testing: King County Medical Examiner

- Reminder: We are testing deceased patients to help trace and contain the virus.
- We are striving to test anyone that **won't be examined by the Medical Examiner** including deaths in private homes.
- BLS Units:
 - Code green the Medic Unit for obvious death that will be taken to the Medical Examiner (e.g. trauma, homicide, suicide, overdose, homeless)
 - Do not code green the **incoming** medic unit for deceased patients that will not be taken to the Medical Examiner (e.g. Licensed Care Facilities)
 - Request a Medic Unit for single unit BLS DOA responses that SPD has determined the Medical Examiner will not respond.
 - Request FAC page M44 for consult if uncertain or questions remain.

Swab Testing: First Responder Test Site

- The King County Test Sites are now available to symptomatic first responders, first responder household family members, governmental essential personnel, healthcare professionals and high-risk community-based organization staff.
- Reminder: If interested in testing, complete this [survey](#) (also found on the daily snapshot).

COVID-19 101

Community Transmission - How does the virus spread?

- Appropriate PPE use has proven to be effective in minimizing occupational exposures.
 - Of 700 EMS providers who cared for COVID-19 patients, only 0.4% experienced confirmed COVID-19 illness in the first 6 weeks from the outset of the pandemic in Seattle/King County.
 - **Highest risk is doffing PPE.**
- Recent studies have shown that people can be infected before they show symptoms, (pre-symptomatic or asymptomatic). In one nursing home in King County, widespread testing found 54 of 89 residents were COVID-19 positive. 27 were asymptomatic (no symptoms or chronic symptoms), and 24 of 27 (89%) of these patients went on to develop symptoms, median time to symptom onset was 4 days. <<https://bit.ly/2VMdSC2>>.
- Modes of transmission:
 - Droplet – Respiratory cough, sneeze, spit
 - Contact – Shed virus from source patient deposited on surfaces
 - Non-porous vs Porous surface
 - Live/infectious up to 72 hours
 - Airborne – aerosolized virus
 - Advanced airway procedures or nebulized medication
 - “Floats” in the air
 - <<https://bit.ly/3d18b94>>

Links for more information into coughing, social distancing and runner airstream

- Info about coughing: <https://bit.ly/2L0fqT3>
- Simulation of droplets talking and running: <https://bit.ly/3bTVqNo>
- Social distancing works: <https://bit.ly/3bRuRIZ>

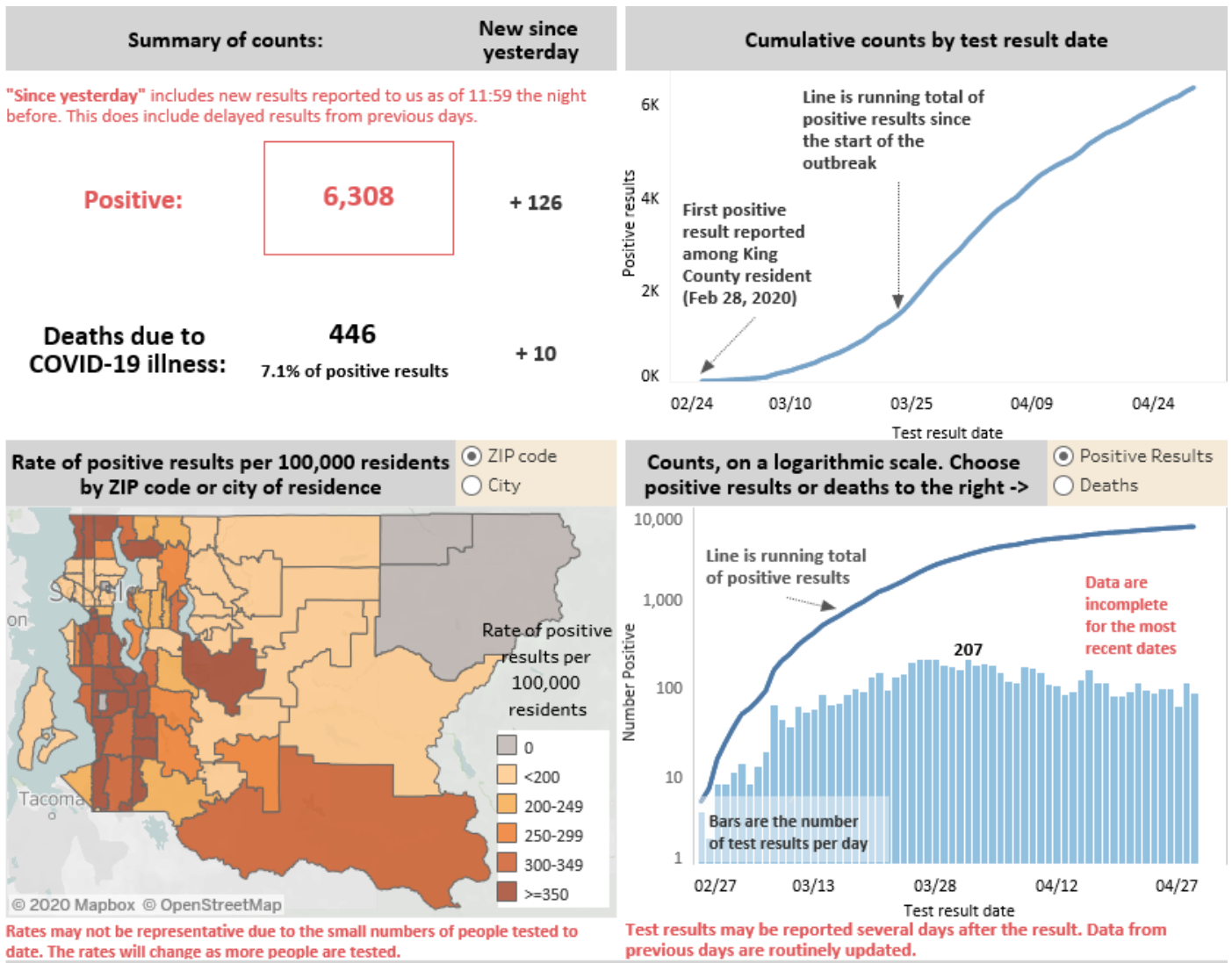
Community Transmission Protective measures

- Hand hygiene
- Social distancing
- Symptom Tracker/ Self-Monitoring
- Masks: Because COVID-19 can spread among people before they have symptoms, the CDC recommends cloth masks in the community.

- Surgical masks have been shown to be effective in reducing risk of contracting respiratory viruses by 68% compared to not wearing a mask. <https://bit.ly/3bQqnSH>
- Cloth masks, on the other hand, have been shown to be effective in reducing risk of contracting respiratory viruses by 20%. <https://bit.ly/3alHhkY>

King County Stats

- Public Health-Seattle & King County is now breaking down COVID 19 statistics by city and zip code on its [data dashboard](#). Additional data points include positivity rates and death rates, sex and age. Both charts represent Seattle data as of April 30, 2020. Click above link for more information.



- Additional ESO data and trends can be seen [here](#).

Department Updates

Fireground & Training

- Beginning on May 4th:
 - The primary order is that all training must honor either 6' physical distancing or utilize PPE (N95 or SCBA) to avoid exposures.
 - Training is permitted outside of fire station grounds. For the time being, no more than 2 companies training together in one location.
 - The JTF can be used by all Operations companies, based upon prop/site availability.
 - At post-fire activities, (in staging) honor the 6-foot physical radius.

Inspections

- Continue to forgo building inspections but complete all hydrant inspections.

Blood Pressure

- The stations will not be providing the community members with blood pressure checks.

Division Visits

- There are to be NO visits to the FPD, JTF, Fire Garage, Commissary, FAC, HMC or HQ unless otherwise directed by a Chief Officer or the FAC.

Friday Night Lights



- On April 17, SFD launched a new event called Friday Night Lights to thank the community for staying home and to let them know we are here to serve during this challenging time of battling COVID-19. We held two Friday Night Lights events in April and observed widespread community engagement.
 - Thank you to all who have been on-duty the last two Fridays in April, and to those who have gone the extra mile to make this event a success.
 - The department has received positive feedback from SFD members and the community members we serve and plans to continue this event in the coming weeks.
 - The May 1 event will be dedicated to honoring essential workers as part of a larger City event - grocery store and pharmacy employees, healthcare workers, first responders, utility personnel, etc.
- Check the **activity scheduler** for the highlighted target zone on the map for each week.
 - **Click here for clips from these events:**
 - Engine 36 driving through their district: [Here](#)
 - Community Thank you #1: [Here](#)
 - Community Thank you #2: [Here](#)

IT Update



- On May 7th, Seattle IT will be replacing the existing OWA (Internet Explorer) email icon with the OWA (Chrome) email icon on all of the computers at the Fire stations. This will provide you better security reliability when accessing your email account.

Health One Referrals

- Health One is accepting referrals city-wide for both:
 - Stable COVID+ patients in need of assistance (quarantine/isolation arrangements, etc.)
 - OR COVID negative/unknown patients affected by shelter-in-place (vulnerable, cut off from caregiver, in need of utility/food/medication support, medical transport, etc.)
- How to refer (any of the below):
 - Laminated sheet distributed to all stations: email photo to sfd.health1@seattle.gov (preferred option)
 - Call 206-886-8436
 - Use [online reporting form](#)
 - Use MIH tab in ESO forms – “COVID19” option

COVID-19 Training Package #10 Scenarios/FAQs

1. Crews respond code yellow for a welfare check on 62 YOM at a single-family residence.
 - a. Approach:
 - i. 2-person Recon team by arriving BLS unit
 - ii. Quickly assess the patient and determine obvious DOA (lividity, rigor mortis, etc.)
 - iii. Request “C&C”
 - iv. Communicate with SPD to determine if the deceased patient is going to the Medical Examiner:
 1. **YES**- no other actions needed.
 2. **NO**- request Medic Unit for nasal swab.
 3. **Undetermined/ Unknown**- Request FAC page M44 for consult
 - b. Exclusions (**all below incidents are investigated by ME**):
 - i. Homeless
 - ii. Trauma
 - iii. Suicide
 - iv. Homicide
 - v. Overdose

Department Training

Deputy 1 Significant Incident Report (D1 SIR)

- The department is implementing a new program called Deputy 1 Significant Incident Report (D1 SIR).
- The process will allow the Department to gain knowledge and use our incidents to incrementally improve our learning points and recognize our excellence at these incidents.

-
- A debrief is to be conducted at every incident that either:
 - Is a structure fire that utilizes the bulk of the initial response
 - Or any technical response that presents complexities, such as a protracted extrication or a hazardous material incident with patients
 - Or as requested by the Assistant Chief of Operations (89) or Deputy 1.
 - To complete the debrief:
 - Assemble the Officers together on scene for a 15-20 minute debrief while observing physical distancing. A Skype call later in the shift is also an acceptable forum for a debrief.
 - The first-in Battalion Chief will conduct the debrief and Deputy 1 will audit. The Battalion Chiefs will use the appropriate command sheet and walk down each listed duty per unit to see whether it was achieved. If any variables occurred, have the Officers state the reasons for the variable.
 - In addition to the on scene debrief, Deputy 1 will review the incident radio to complete either a FIRE or TECH debrief template and then send to their Battalion Chief for input.
 - Deputy 1 will then forward a completed draft of the debrief to 89.
 - 89 will work with Deputy 1 to ensure clarity of the final report.
 - Once completed, the reports will be posted on-line.
 - At the monthly BC meetings, the primary take-aways will be produced into a collective take-away.

Here are the first 2 Dep 1 SIR's to be published:

1. **2325 48 Avenue SW D1 SIR (4/11/20):**
For this SIR, read about flying hot embers that, in some cases, flew nearly 12 blocks away from this fire scene. See how the crews handled it. [Click here](#)
2. **1 Avenue NE & NE 45 Street D1 SIR (4/23/20):**
For this fire, read about how critical apparatus placement is when there is a chance the incident strategy may become defensive at any point. [Click here](#)

Training Package #10 Hazmat ERG Scenario #1

- First review the HazMat Emergency Response Guidebook PowerPoint [here](#).
- **Scenario:** You are dispatched to a Cold Storage facility for a possible hazmat leak. It is 15:30 with the wind coming out of the West at approximately 10 mph. You stop 1 block away and see a white cloud coming from this trailer:
 - Video of release: https://www.youtube.com/watch?v=qli4_Poo2HY
- **Questions:**
 1. What is the name of material that is leaking?
 2. What Guide Page number is associated with this product?
 3. What section do you turn to since no fire is involved?
 4. What is the initial isolation zone and downwind protective action zone?

Training Package #10 Hazmat ERG Scenario #2

- **Scenario:** Your engine is dispatched to the railyard at Interbay for a leaking tank car.
- **Objective:** Use the HazMat SOG and ERG to address this incident.
- **Considerations:**
 - 0930hrs on a Wednesday in March. Temperature 58°.
 - Overcast sky with intermittent showers, light wind from the SW.
 - You are responding from the East when the dispatcher updates, “Railyard employee who was in the area now complains of headache, nausea and difficulty breathing.”
 - Upon arrival a railyard employee wearing a NE Patriots ball cap in a white pickup signals you to follow. You are careful to remain upwind as you come upon this scene.



- Your driver, as a hobby, collects miniature railcars and identifies this one as a general service tank car, not pressurized.
 - With binoculars you observe a liquid trickling from the bottom of the middle of the tank.
- **Using the HazMat SOG:**
 - What is your initial size-up?
 - What size is your initial isolation zone?
 - What resources are you requesting?
 - What are your initial tactics?
 - Your driver once again comes through and identifies this signage on the tank.
 - **Questions:**
 1. Which ERG guide will you use?
 2. What are the main issues with this product according to the ERG?
 3. What PPE will you use?
 4. What detection equipment can you use?
 5. There is a maintenance shed to the north. Will you evacuate the building or shelter in place?
 6. What are your instructions for incoming units?
 7. Where will you stage the HMRT?
 8. How does the rain affect this incident?



Answers for both scenarios on last page below.

Scenario #1 Answers

Utilize the Yellow Pages to look up the UN ID number 1005

1. Name of the product is Anhydrous Ammonia
2. Guide Page number 125
3. Because this product is highlighted in Green and there is no fire you, refer to table one for isolation distances
 - a. This is considered a LARGE spill so it directs you to refer to Table 3
 - b. This is a Highway Tank trailer
 - c. Initial isolation 500' in all directions
 - d. Day time with moderate wind
 - e. Downwind protective action zone equals 0.3 miles

Scenario #2 Answers

1. **What is your size up?** Utilizing the Hazmat SOG, identify appropriate factors relating to the response. Announce, "Hazmat SOG in effect." Initiate scene setup, identify the type of incident, set up isolation perimeter, and establish public protective actions.
2. **What is your initial isolation zone?** 300' in all directions. (Apparently, the placard hasn't been identified yet. This is determined by the type of tank car in question.
3. **What resources are you requesting?** This is a Hazmat response. Additional resources to consider will be: SPD (to assist with initial isolation), the rail authority for this location as well as BNSF to control active rails.
4. **What are your initial tactics?** Set up the isolation perimeter, establish public protective actions, gather as much information as possible and keep reporting party on scene, and designate initial Hot zone. Locate the affected patient and provide care.
5. **Which ERG guide page will you use?** Guide page 135
6. **What are the main issues with this product according to the ERG?** This is a highly toxic chemical that presents an extreme fire/explosive potential. It also extremely water reactive.
7. **What PPE will you use?** Operations will use bunking gear with SCBA's. Operations companies will not enter the hot zone!
8. **What detection equipment can you use?** Operations companies will utilize the ERG, binoculars, along with weather conditions to make sound response decisions.
9. **There is a maintenance shed to the north. Will you evacuate the building or shelter in place?** Decisions will be made using the RBA conducted by the IC.
10. **What are your instructions for incoming units?** Respond from the upwind side and staging on the same side allowing room for the hazmat team access to setup.
11. **Where will you stage the HMRT?** The Hazmat team will setup at the initial isolation perimeter line established by the 1st arriving unit.
12. **How does the rain affect this incident?** This is a very water reactive chemical. This creates a greater hazard for fire/explosion.